



SPRINGFIELD VILLAGE

Clemmons, North Carolina

ARDEN
HOMES SIMPLY BUILT BETTER

WELCOME TO SPRINGFIELD VILLAGE

Starting in the low \$400's

Springfield Village is a new addition to the highly sought-after Springfield Village community, located in Clemmons, North Carolina. This community will comprise 26 low-maintenance homesites, perfect for those seeking a peaceful and easy lifestyle. The community is situated on over 50 acres, providing residents with a tranquil and serene living environment.

Springfield Village offers two twin-home plans that cater to a variety of lifestyle needs. The homes feature personalized structural designs, allowing you to create a living space that perfectly fits your requirements. With a low-maintenance lifestyle, you can enjoy your home without the added stress of upkeep.

ARDEN
HOMES SIMPLY BUILT BETTER

Low Maintenance Living

Experience the convenience of hassle-free living at Springfield Village. The homeowner's association ensures that common areas such as streets, sidewalks, and street lights are well-maintained.

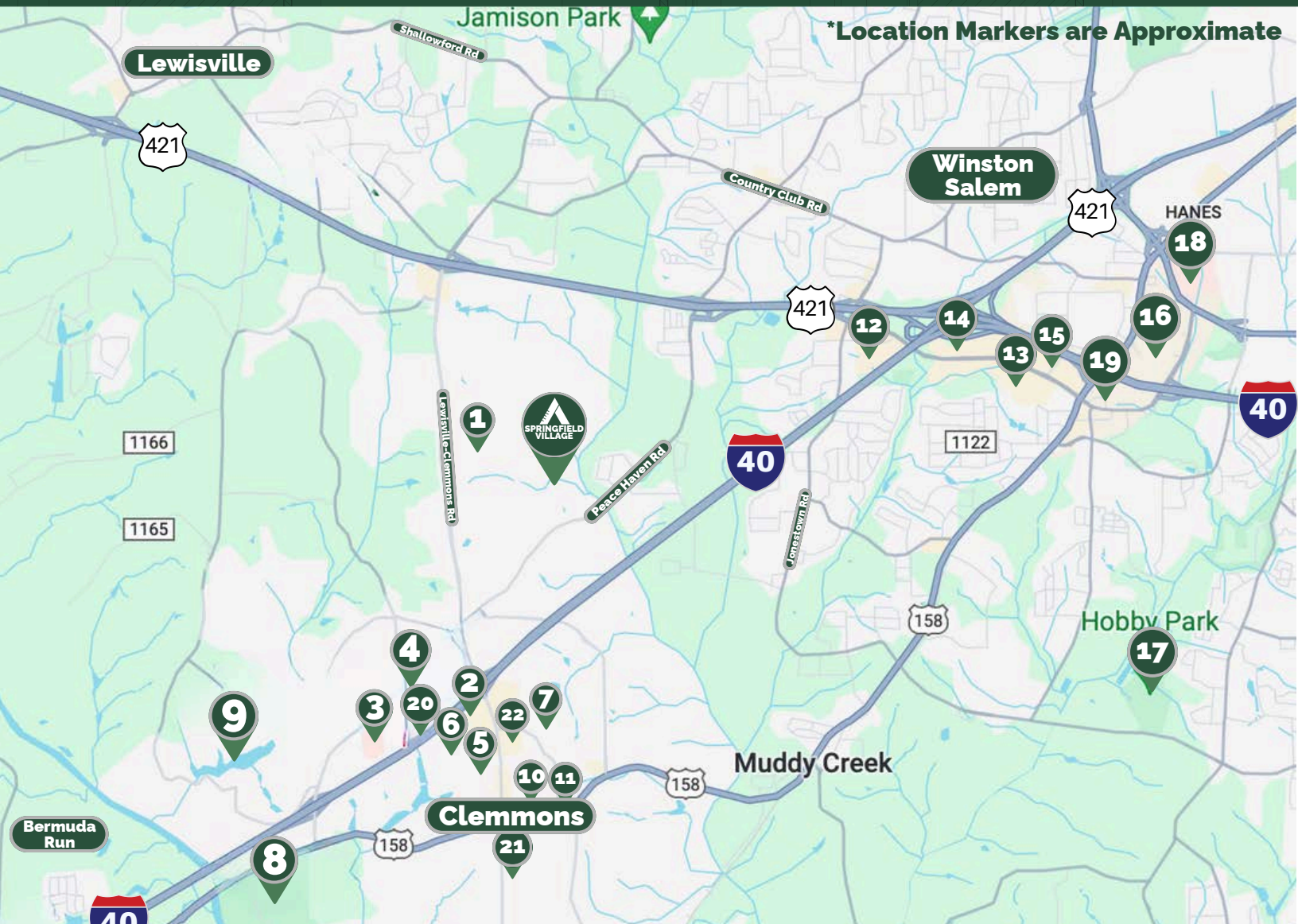
Additionally, exterior building maintenance, including siding, brick, and roof repairs are taken care of. Say goodbye to lawn care worries as the HOA also covers exterior landscaping needs. Enjoy the simplicity of low-maintenance living at Springfield Village.

Conveniently Located

Springfield Village is located just minutes from Downtown Winston-Salem & the heart of Clemmons, which both provide endless opportunities for recreation, shopping, dining, and medical facilities. Within a few miles you'll find West Forsyth High School, Tanglewood Park & Golf Course, various parks & trails, and much more.



SPRINGFIELD VILLAGE



*Location Markers are Approximate

Things to Do & Local Conveniences

- 1** West Forsyth High School
- 2** Publix
- 3** Novant Health of Clemmons
- 4** Morgan Elementary
- 5** Planet Fitness
- 6** Clemmons Veterinary Clinic
- 7** Clemmons Library
- 8** Tanglewood Park, Golf Course & More
- 9** Lasater Lake
- 10** CVS
- 11** Starbucks
- 12** Walmart
- 13** Costco Wholesale
- 14** Target
- 15** Sams Club
- 16** Hanes Mall
- 17** Hobby Park
- 18** Forsyth Medical Center
- 19** Best Buy
- 20** Jerry Long YMCA
- 21** Walmart Neighborhood Market

Shopping Center

- **Lowes Foods**
- **UPS Store**
- **Staples**
- **Chick-fil-A**
- **Subway**
- **Kimono Japanese**
- **The Brewers Kettle**
- **Cato Fashions**

AND MORE

22



Floor Plans

ADDISON

1 Story Floor Plan | 1726+ Sq Ft

2 Bedrooms, 2 Bathrooms, Main Level Owner's Suite w/ His & Hers WICs, Laundry Room, Great Room, Dining Room, Covered Front & Back Porch

Floor Plan Options:

- Bedroom 3 (removes Dining Room)
- Second Floor w/ Bedroom 4, Bath 3 & Bonus Room
- Second Floor w/ Bonus Room & Unfinished Storage
- Screened-In Back Porch
- Study (removes Bedroom 2)
- Optional Fireplace w/ Gas Logs

FINLEY

1 Story Floor Plan | 1711+ Sq Ft

2 Bedrooms, 2 Bathrooms, Main Level Owner's Suite, Laundry Room, Pocket Office, Great Room, Dining Room, Patio

Floor Plan Options:

- Second Floor w/ Loft & Bath 3 (removes Pocket Office)
- Second Floor w/ Loft, Bath 3 & Bedroom 3 (removes Pocket Office)
- Covered or Screened-In Back Porch
- Optional Fireplace w/ Gas Logs



Arden Homes reserves the right to revise and/or substitute features, specifications, designs and pricing without notice. All renderings, color schemes, floor plans, maps, and displays are artists' conceptions and are not intended to be an exact depiction of the home or its surroundings.

Eli Freeman
Sales Representative
336-257-9954
eli@ardenhomes.com



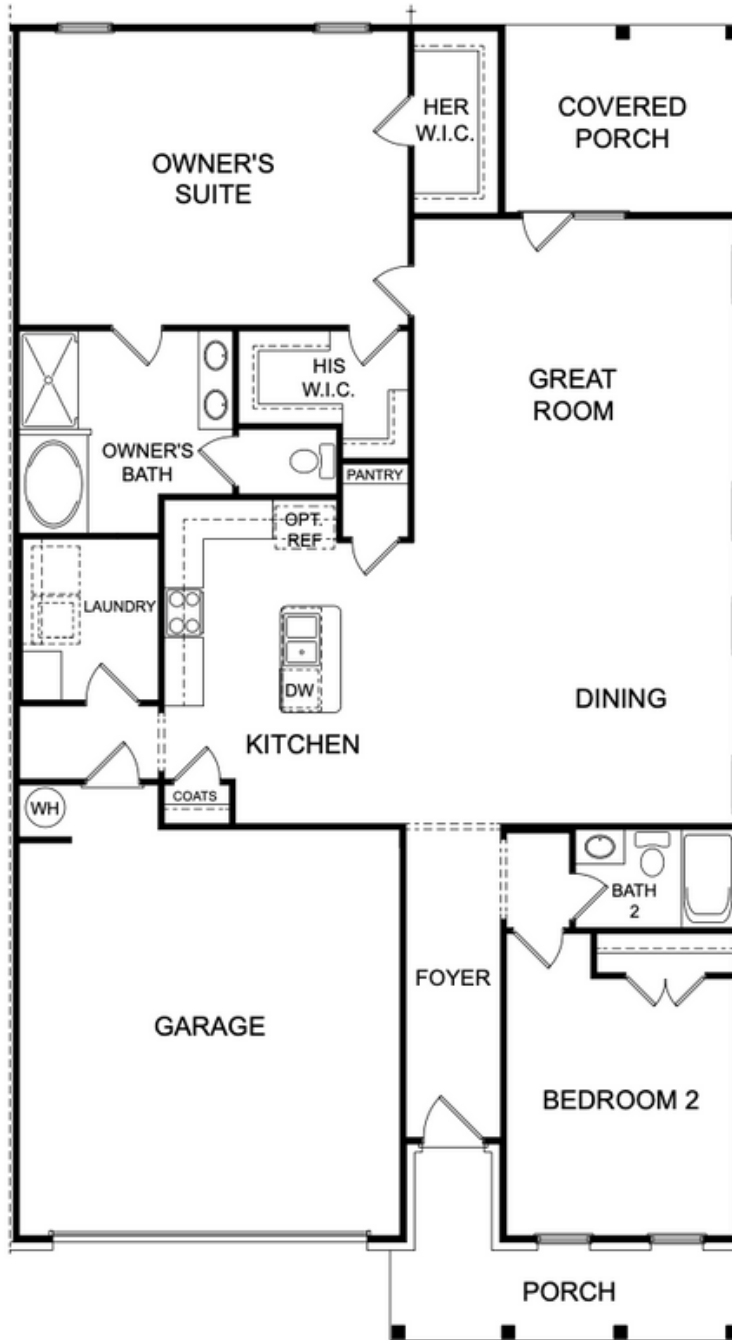
**Addison
Elevations**



Elevation A & B



Addison
Standard Main Level Floor Plan

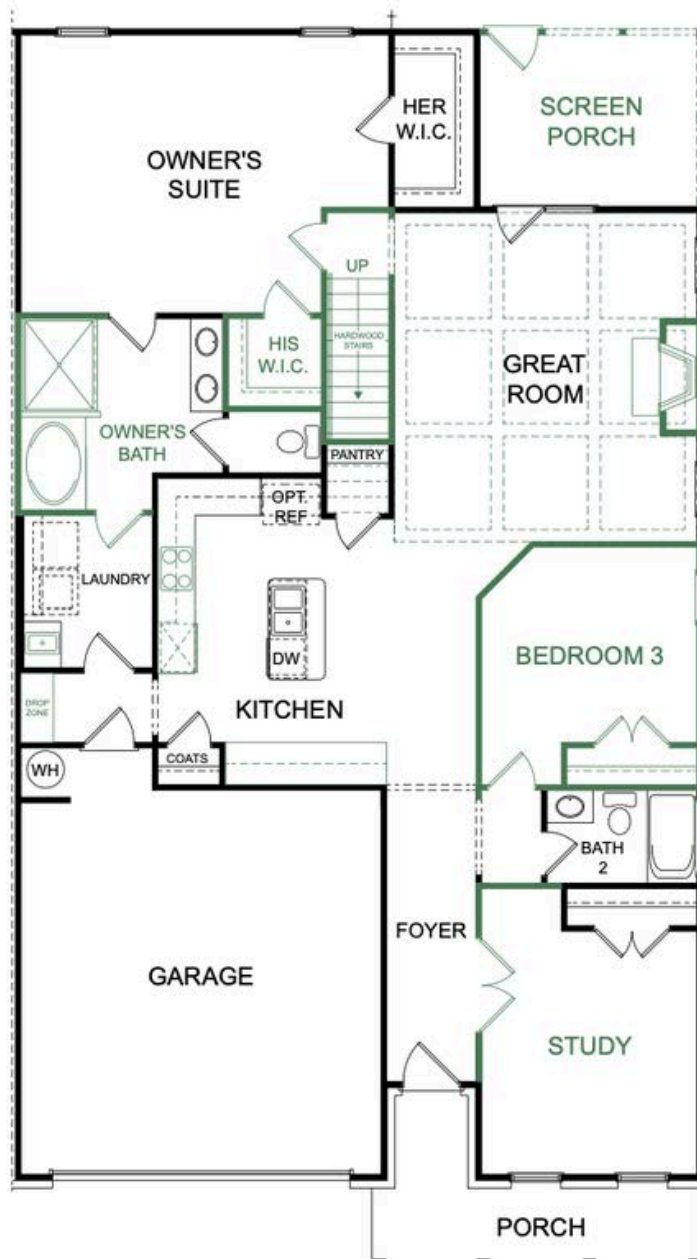


Addison

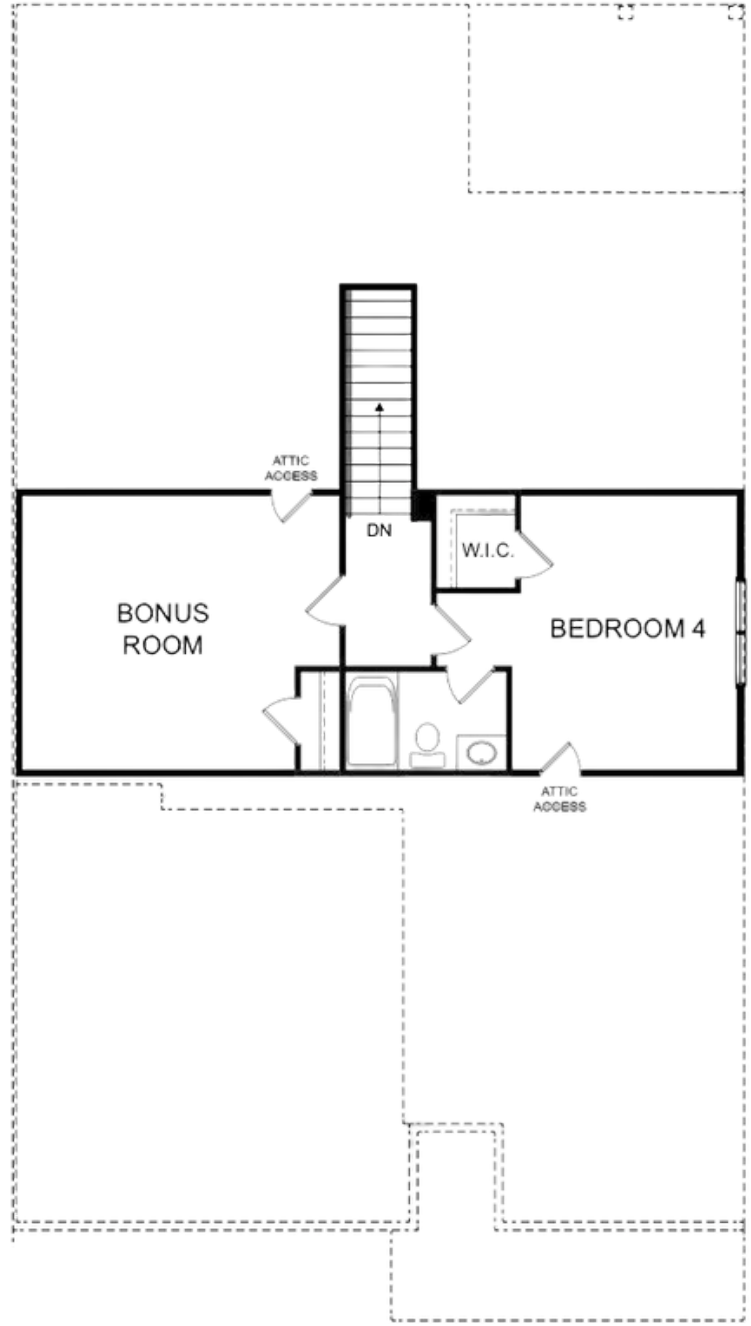
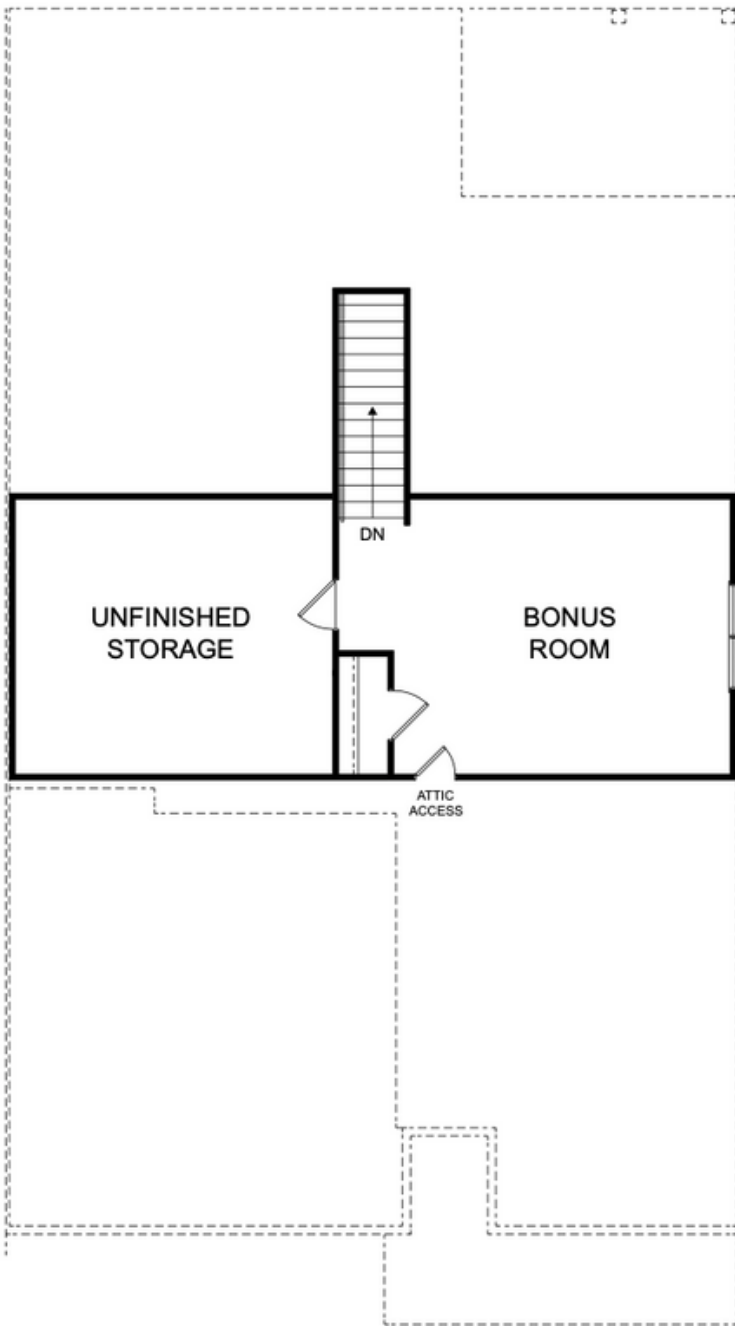
Fully Upgraded Main Level Floor Plan w/ Option List

Standard Options ▼

- Optional Coffered Ceiling - Owner's Suite
- Optional Accessible Bath - Owner's Bath
- Optional Tile Shower - Owner's Bath
- Optional Owner's Bath/Laundry Room Door
- Optional Stairs to Optional Second Floor
- Optional Screen Porch
- Optional Coffered Ceiling - Great Room
- Optional Fireplace
- Optional Bedroom 3
- Optional Bath 2 Window
- Optional Study
- Optional Cabinets Along Kitchen Wall
- Optional Gourmet Kitchen
- Optional Laundry Sink



Addison
Optional Second Floor Choices



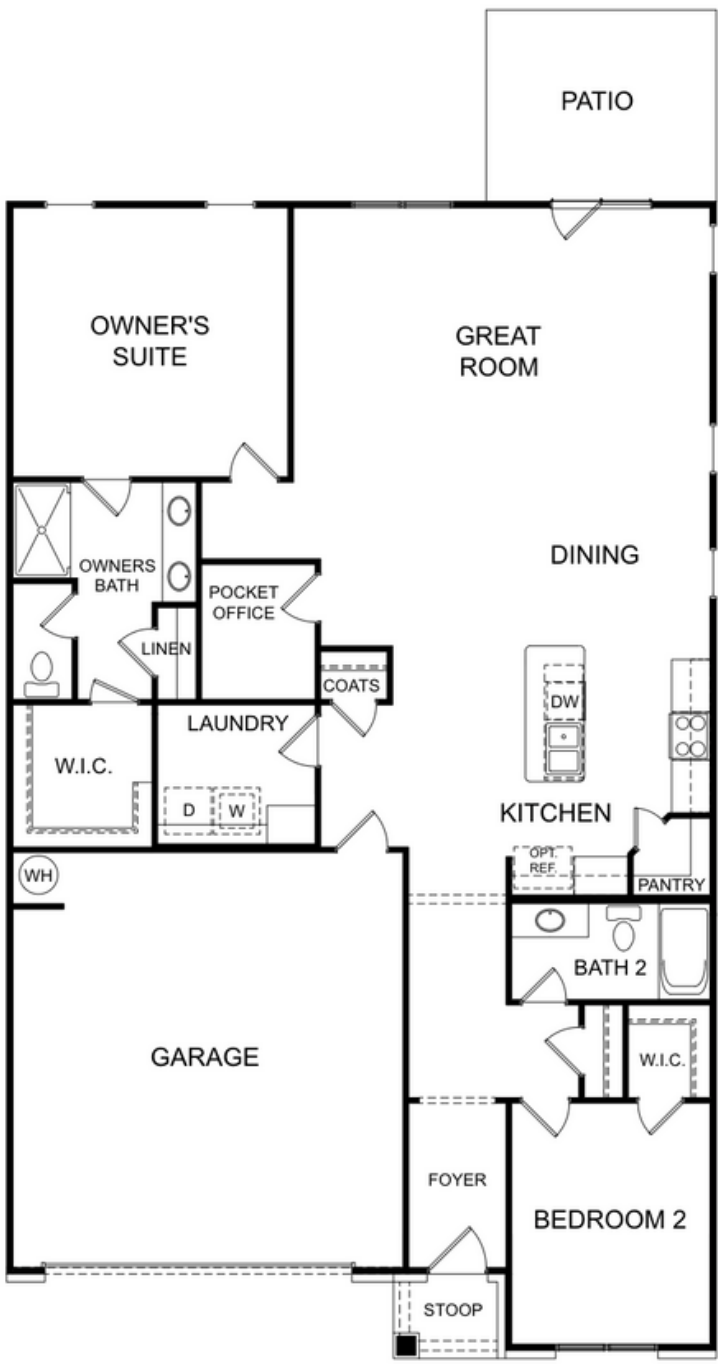
**Finley
Elevations**



Elevations A & B



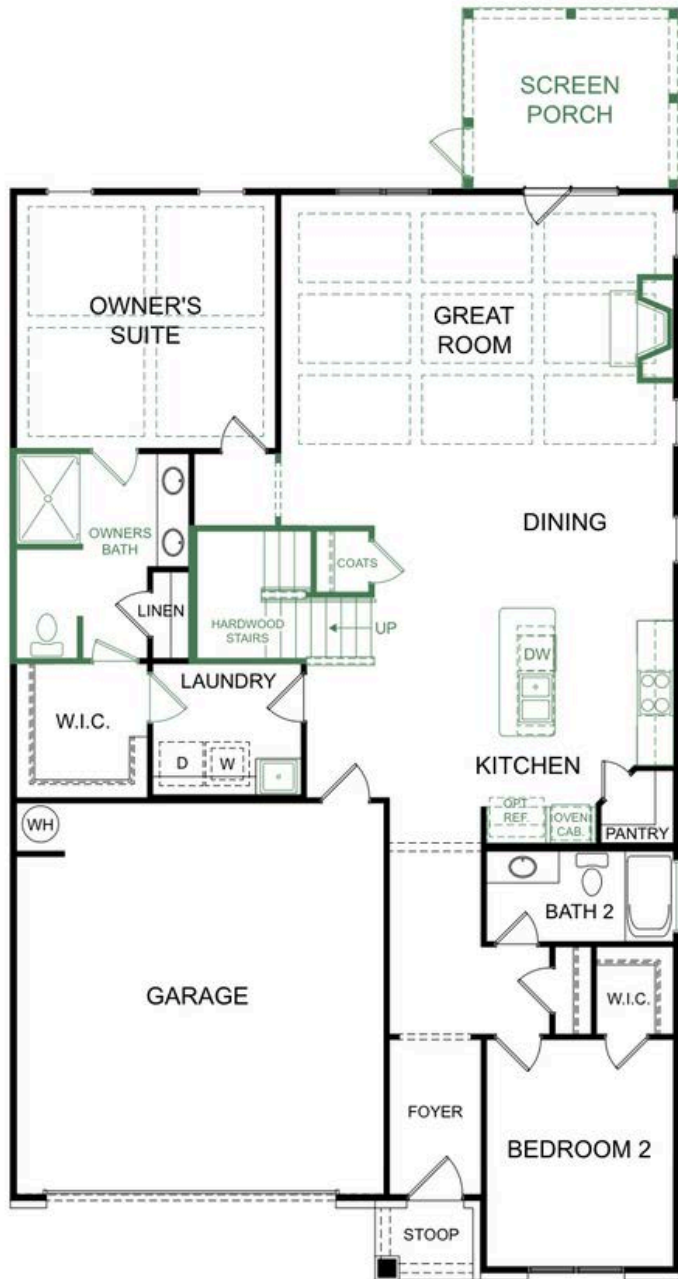
Finley Standard Main Level Floor Plan



Finley

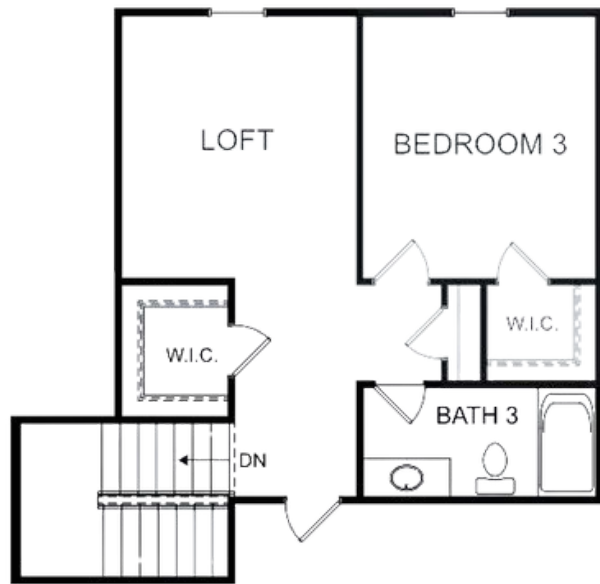
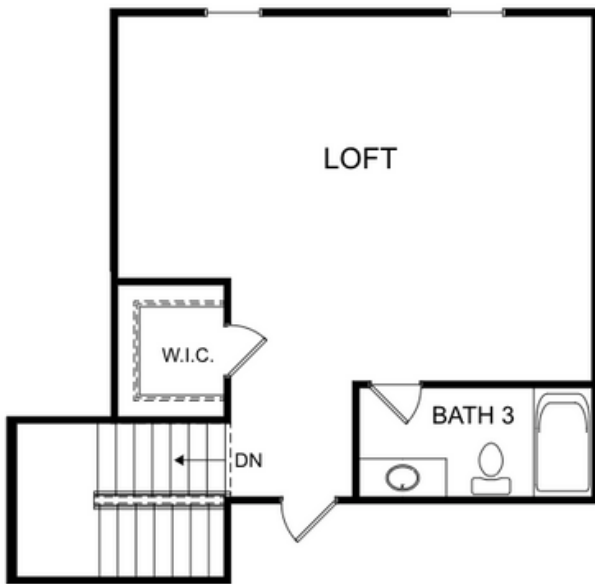
Fully Upgraded Main Level Floor Plan w/ Option List

- Standard Options** ▼
- Optional Covered Porch
 - Optional Screen Porch
 - Optional Coffered Ceiling - Owners Bedroom
 - Optional Coffered Ceiling - Great Room
 - Optional Fireplace
 - Alt. Owner's Bath - Opt. Accessible Bath
 - Alt. Owner's Bath - Opt. Tile Shower
 - Optional 2nd Floor
 - Opt. Pocket Office Desk
 - Optional Owners Walk In Closet / Laundry Door
 - Optional Laundry Sink
 - Optional Gourmet Kitchen
 - Optional Bath 2 Window



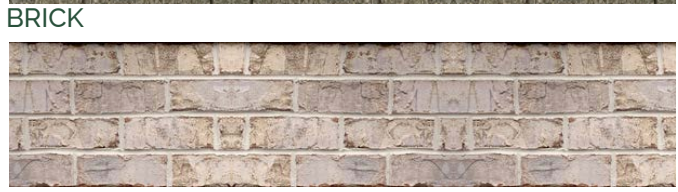
Finley

Optional Second Floor Choices

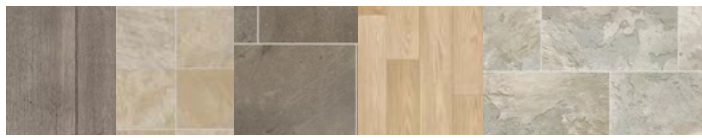
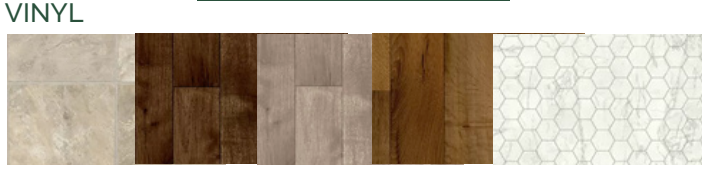


INCLUDED FEATURES

ROOF EXTERIOR OPTIONS



FLOORING OPTIONS



CABINETS INTERIOR OPTIONS



KITCHEN GRANITE COUNTERTOPS



KITCHEN BACKPLASH



INTERIOR PAINT



LAMINATE HARDWOOD



Standard Selections

Exterior Finishes

- **Foundation** - Concrete
- **Vinyl Siding** - 5" Double Dutch Lap (Per Plan/Elevation)
- **Brick Veneer** - Pine Hall O/S - Arden Approved Colors - 3 Sides
- **Board & Batten** - Vinyl (Per Plan/Elevation)
- **Shakes** - Vinyl (Per Plan/Elevation)
- **Soffits** - Double 5" Vinyl
- **Fascia, Garage Door Surrounds, & Porch Beams** - Aluminum Wrap
- **Shutters** - Vinyl - (Per Plan/Elevation)
- **Gable Brackets & Accents** - Fypon or Synthetic Equivalent - (Per Plan/Elevation)
- **Porch Ceilings** - Double 5" Vinyl Soffit
- **Roofing** - GAF Timberline 30 Year - Architectural
- **Windows** - White - Vinyl Single Hung - GBG (Per Plan)
- **Front Door** - 6 Panel - Smooth Fiberglass
- **Garage Door** - 1-Sided Steel - Non-Insulated - Choice of Panel - Blue Ridge Hardware & Opener
- **Concrete Flatwork (Sidewalks, Driveway)** - Concrete (Brushed Finish)
- **Concrete Patio** - Addison Plan: No Flatwork Outside of Covered Patio | Finley Plan: 10' x 12' (Brushed Finish)
- **Landscaping** - Sod to Front Corners of House, Seed/Straw Sides & Rear, Standard Plant Package

Plumbing

- **Lavatory Fixtures** - Moen® - Eva or Brantford - Chrome
- **Kitchen Sink Fixture** - Moen® - Camerist 7545C - Chrome
- **Tub/Shower Fixture** - Moen® - Eva or Brantford - Chrome
- **Garden Tub Fixture** - Moen® - Eva or Brantford - Chrome
- **Water Heater** - 50 Gallon Electric
- **Water Closets** - Elongated Standard Height - White
- **Water Lines** - Pex Water Lines
- **Exterior Hose Bibs** - (2) Frost-free Hose Bibs
- **Kitchen Sink** - 18 Gauge Stainless Steel Undermount w/ Choice of: 50/50 Two Bowl or 60/40 Two Bowl
- **Owner's Suite Shower** - 1 Piece Fiberglass Shower Unit
- **Secondary Bathroom Tub/Shower** - 1 Piece Fiberglass

**** FIREPLACES ARE OPTIONAL ****



Standard Selections

Interior Finishes

- **Interior Doors** - Choice of Arden Approved Door Style - Hollow Core
- **Interior Door Hardware** - Better Home Products - Marina - Brushed Nickel
- **Front Door Handleset** - Better Home Products - Van Ness - Brushed Nickel
- **Cabinets (Kitchen & Baths)** - Level 1 - Stained Finish - Staggered w/ 2 1/8" Crown Molding
- **Kitchen Cabinet Uppers** - Staggered Layout per Plan
- **Granite Kitchen Countertops** - Granite - Level 1
- **Vanity Bathroom Tops - Quarts** - Craven White 1.5CM - w/ Undermount Oval White Oval Porcelain Sink Bowls
- **Standard Countertop Edge Profile** - Pencil Edge
- **Shower Doors (Only Owner's Suite)** - Full Frame - Brushed Nickel - Clear Glass
- **Bath Accessories** - Better Home Products® - Soma - Brushed Nickel
- **Wall Paint** - Sherwin Williams® - Flat w/ Choice of one Arden Approved Color
- **Ceiling Paint** - Sherwin Williams® - Flat - Bright Ceiling White
- **Trim Paint** - Sherwin Williams® - Semi-Gloss - Extra White
- **Closet Shelving** - Ventilated White Wire
- **Kitchen Backsplash** - Level 1

Trim Package

- **Baseboard** - 4 1/4" MDF Base
- **Door Casing** - 2 1/4" 356
- **Window Trim** - Drywall Returns
- **Crown Molding** - 3 5/8" #49 (Downstairs Main Living Areas Only)
- **Stairwell** - Carpeted Pine Box (w/ Optional 2nd Floors Only)

Floor Coverings

- **Laminate Hardwood (Foyer, Great Room, Kitchen, Dining, Office)** - Mohawk Level 1 - Kingsford 8mm
- **Vinyl (Baths, Laundry)** - Mohawk - Level 1 - Scottsdale
- **Carpet (Bedrooms, Stairs (Optional 2nd Floor Only), Hallway, Loft, & Study)** - Mohawk - Level 1 - Reactivate
- **Carpet Pad** - 5 lb

**** FIREPLACES ARE OPTIONAL ****



Standard Selections

Heating & Air Conditioning

- **Gas Furnace** - Trane®
- **Air Conditioning Unit** - Trane®
- **Thermostat** - Honeywell® Digital
- **Ductwork** - Sealed & Tested

Electrical & Lighting

- **Interior Light Fixtures** - Progress Lighting® - Replay Package
- **Exterior Light Fixtures** - Progress Lighting® - Westport Series
- **Switch & Outlet Covers** - Standard - White - No Dimmers
- **Cable Outlets** - (2) Cables and (2) Cat 6's on 1st Floor, (3) Cables and (3) Cat 6's w/ Optional 2nd Floor
- **Loft/Bonus/Owner's Suite/Great Room Ceiling Fans** - Progress® Lighting - Airpro Ceiling Fan
- **Ceiling Fan Prewires** - In Secondary Bedrooms
- **LED Flush Mount** - Over Tubs/Showers
- **Recessed Can Lights** - 3-5 in Kitchen Ceiling
- **Wall Conduit** - Installed Over Fireplace to Run AV Cables in Wall (w/ Optional Fireplace Only)

Appliances

- **Dishwasher** - G.E. - GDF550PSRSS
- **Disposal** - (1/3 HP) - G.E. - GFC525N
- **Microwave** - G.E. - JVM6175SKSS
- **Range** - G.E. - GRF600AVFS

"Behind The Walls"

- **Wall Framing** - Primary 2x4 Walls - 2x6 Where Specified on Plans 16 in. on Center
- **Floor Joists** - Engineered Wood I-Joists
- **Insulation** - Batt in Walls, Blown Fiberglass in Ceilings, Caulked Studs & Electrical Boxes
- **Roof Trusses** - Engineered Pre-Fabricated Wood Trusses
- **House Wrap** - Barricade

**** FIREPLACES ARE OPTIONAL ****





SIMPLY BUILT BETTER

**FOR MORE INFORMATION ON
SPRINGFIELD VILLAGE:**

Eli Freeman
Sales Representative
336.257.9954
eli@ardenhomes.com